

PALLET TRUCK

ALPHABETICAL TABLE OF CONTENTS

TOTAL SOURCE[®]

Parts and Accessories

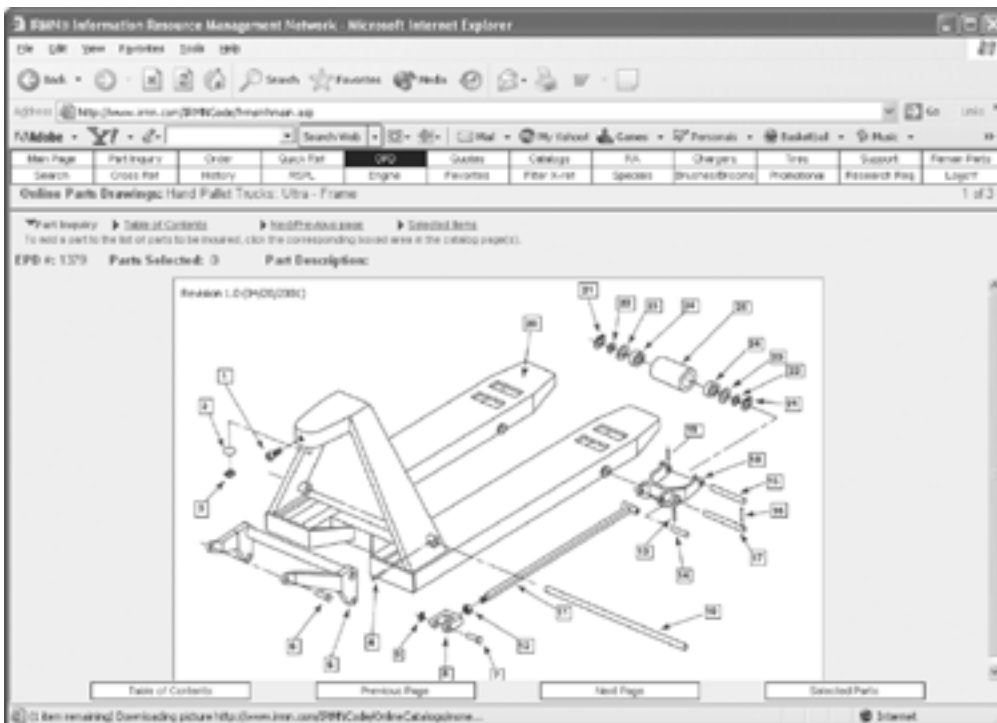
Ecolift.....	24.6-24.9	Ultra.....	24.2-24.5
Euroliifter.....	24.10-24.12		

SMH now offers replacement parts for a wide range of pallet trucks including:

Atlas	Crown	Mobile	Pramac
Bishamon	Interthor	Multiton	Raymond
Blue Giant	Jet	Palletmaster	RoL-Lift
BT	Lift-Rite	Pallet Mule	
Caterpillar	Mitsubishi	Parts Listing	

For complete information on all pallet truck replacement parts including:
Part numbers, descriptions, and line drawings by make and model,
please visit us at www.irmn.com or reference our CD catalog.

IRMN example screen





PALLET TRUCK

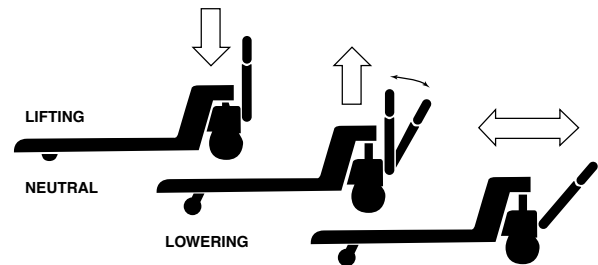
ULTRA®

MODEL UL5500

- Hard chrome-plated ram and piston
- Self-lubricating bearings at all pivot points
- Large steer wheels with "Ball-thrust" steering
- High tensile steel frame and seamless forks
- Grease fittings
- Full adjustable push rods on forks
- 230° pivot action maneuvers in compact areas
- Spring-a-matic handle self returns
- Only 1 snap ring—4 pins to remove hydraulic unit
- Poly-nylon steer wheels and load rollers standard, for easy quiet travel
- Tapered fork ends and maintenance-free skids for easy entry and exit of pallets
- Painted quality safety color after anti-rust treatment
- Safety designed loop handle, includes neutral position and fingertip release
- Load capacity: 5,500LBS
- Lowered height of forks: 2.9"
- Raised height: 7³/₄"
- Overall width across forks: 27"
- Fork width: 6"
- Space between forks: 15"
- Standard fork lengths: 48"
- Load rollers: 2.9"x 3⁵/₈"
- Front wheels (steer): 7" x 2"
- Wheels: poly-nylon
- Body length (including pump): 16"
- Load roller axle to end of truck: roller down: 6³/₄" roller up: 9³/₄"
- Approximate weight: 202LBS
- 6-month warranty
- Available in USA only



SMH #	DESCRIPTION
UL2187	Pump cylinder seal kit
UL2188	Hydraulic unit seal kit
UL2189	Hydraulic unit
UL2189A	Hydraulic unit with wheels

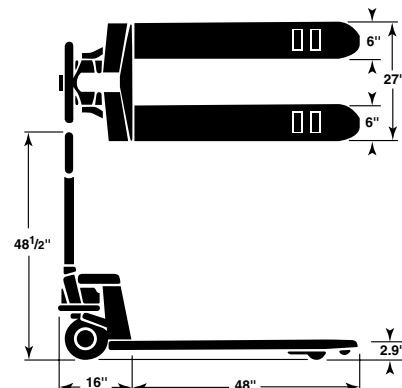


Hand Lowering Control—3 Positions

Lifting—neutral—lowering with handle or foot pedal means extra safety. Neutral allows pumping at the most convenient angle to the operator and free handle movement when the truck is in motion. The handle returns automatically to the vertical position.

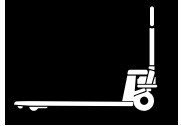
Brake

Safety spring-loaded loop handle allows load to be lowered while in motion to act as a brake.



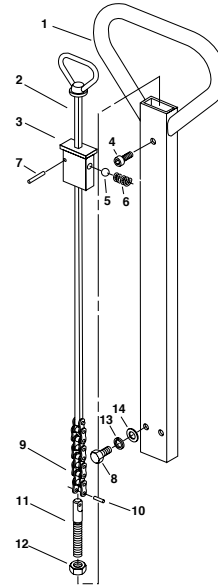
PALLET TRUCK

ULTRA®

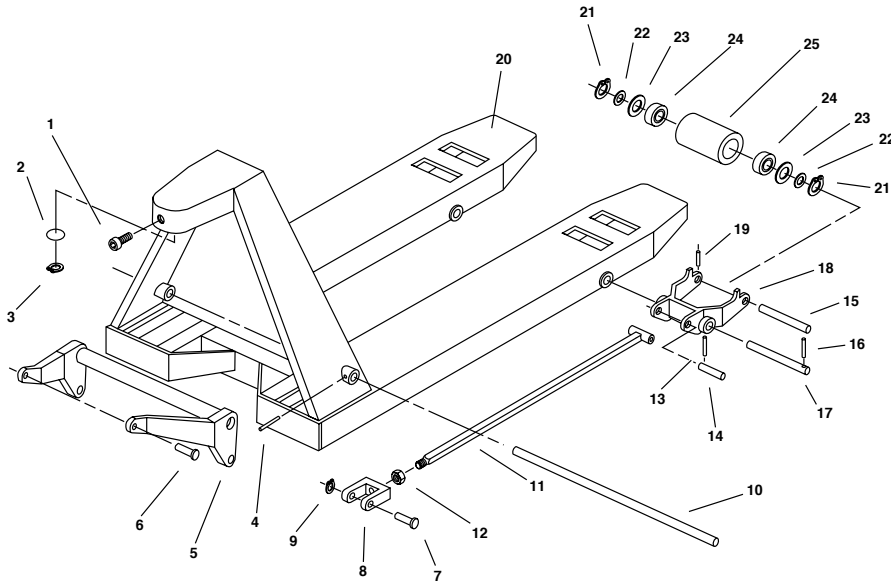


UL5500 HANDLE ASSEMBLY

ITEM #	SMH #	DESCRIPTION
1	UL1401	Handle tube
2	UL1402	Pull rod
3	UL1403	Support base
4	UL1404	Screw
5	UL1405	Steel ball
6	UL1406	Spring
7	UL1407	Pin
8	UL1408	Screw
9	UL1409	Chain
10	UL1410	Pin, old style
10a	UL2410A	Pin, new style
11	UL1411	Adjustable screw
12	UL1412	Nut
13	UL1413	Flat plain washer
14	UL1414	Lock washer
15	UL1401A	Items 1 thru 14

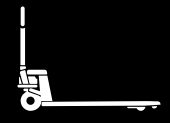


UL5500 FRAME ASSEMBLY



ITEM #	SMH #	DESCRIPTION
1	UL1201	Screw
2	UL1202	Washer
3	UL1203	Retainer
4	UL1205	Spring pin
5	UL1206	Bellcrank
6	UL1207	Thrust plate bolt
7	UL1208	Push rod pin
8	UL1209	Clevis
9	UL1210	Retainer ring
10	UL1211	Bellcrank axle
11	UL1212	Push rod
12	UL1213	Push rod hex nut
13	UL1215	Spring pin

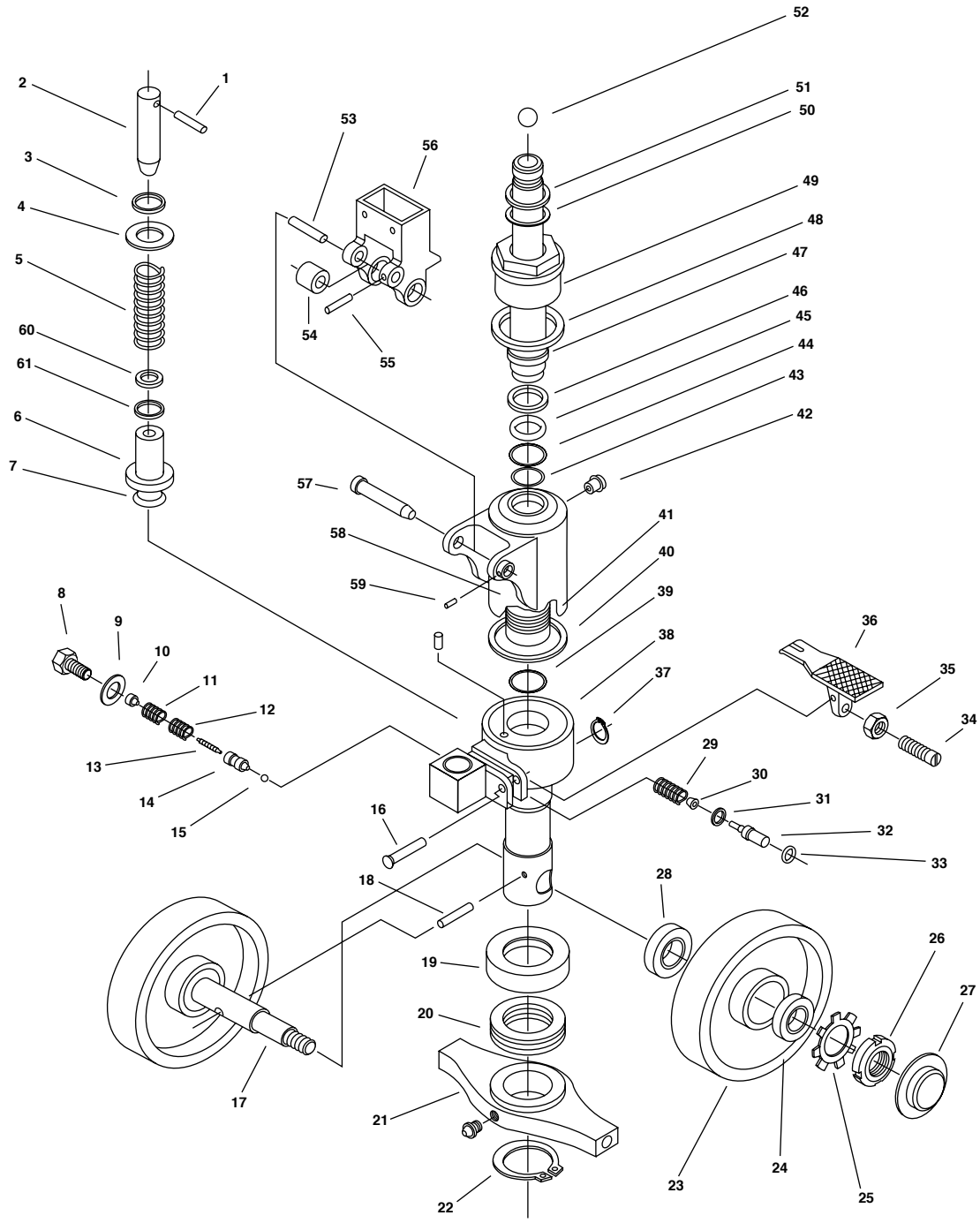
ITEM #	SMH #	DESCRIPTION
14	UL1216	Push rod axle
15	UL1217	Load axle shaft
16	UL1218	Spring pin
17	UL1219	Hanger axle
18	UL1220	Load wheel hanger
19	UL1221	Spring pin
20	UL1222	Fork frame
21	UL1223	Retaining ring
22	UL1224	Washer
23	UL1225	Dust cover
24	UL1226	Bearing
25	UL1227	Load wheel



PALLET TRUCK

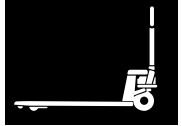
ULTRA®

UL5500 HYDRAULIC ASSEMBLY



PALLET TRUCK

ULTRA®



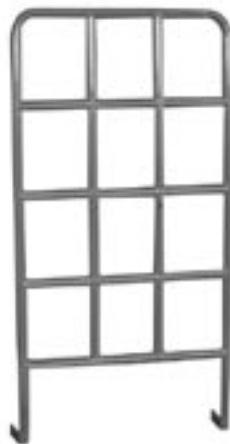
UL5500 HYDRAULIC ASSEMBLY

ITEM #	SMH #	DESCRIPTION	ITEM #	SMH #	DESCRIPTION
1	UL1101	Pin	34	UL1139	Release screw
2	UL2102A	Pump piston	35	UL1140	Nut
3	UL1104	Dust ring	36	UL1141	Foot pedal
4	UL1105	Washer	37	UL1147	Retaining ring
5	UL1107	Spring	38	UL2148A	Base
6	UL2110A	Pump cylinder	39	UL1149	O-ring
7	UL1111	O-ring	40	UL1150	Seal ring
8	UL1112	Plug	41	UL1151	Piston cylinder
9	UL1113	Copper washer	42	UL1152	Oil plug
10	UL1114	Spring seat	43	UL1153	Retaining ring
11	UL1115	Spring	44	UL1154	Washer
12	UL1116	Spring	45	UL1155	O-ring
13	UL1117	Spindle	46	UL1156	Packing cup
14	UL1118	Valve seat	47	UL1157	Seal ring
15	UL1119	Steel ball	48	UL1158	Lift piston rod
16	UL1120	Pin	49	UL1159	Cylinder cap
17	UL1121	Steer axle	50	UL1160	O-ring
18	UL1122	Spring pin	51	UL1161	Seal ring
19	UL2123A	Bearing cover	52	UL1162	Steel ball
20	UL1124	Thrust bearing	53	UL1180	Roller shaft
21	UL2125A	Support base	54	UL1181	Roller
22	UL1126	Retainer	55	UL1182	Spring pin
23	UL1128	Steer wheel	56	UL1183	Handle base
24	UL1129	Bearing	57	UL1184	Pivot pin
25	UL1130	Tab lock washer	58	UL1185	Lift cylinder housing
26	UL1131	Round axle nut	59	UL1186	Spring pin
27	UL1132	Dust cover	60	UL2104	Seal Ring
28	UL1133	Bearing	61	UL2105	U-cup
29	UL1134	Spring			
30	UL1135	Spring base			
31	UL1136	Seal ring			
32	UL1137	Strike pin			
33	UL1138	O-ring			

UL2500

Universal Load Back Rest

- 27 x 48 bolt-on or weld-on
- Color: gray





PALLET TRUCK

ECOLIFT

MODELS E05500 SERIES

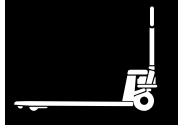
- Capacity 5,500LBS
- Hard chrome-plated ram and piston
- Large steer wheels
- High tensile steel frame and seamless forks
- 230° pivot action maneuvers in compact areas
- Spring-a-matic handle self returns
- Polyurethane steer wheels and load rollers standard, for easy quiet travel
- Entry and exit rollers for easy entry and exit of pallets
- Painted quality safety color after anti-rust treatment
- Safety spring loaded handle allows load to be lowered while in motion to act as break



PART #	DESCRIPTION
E05500	27" x 48" (686mm x 1219mm)
E05501	21" x 48" (533mm x 1219mm)
E05502	27" x 48" (686mm x 1219mm) Tandem Nylon Canada Only
E05503	27" x 42" (686mm x 1067mm) Single Poly Canada Only

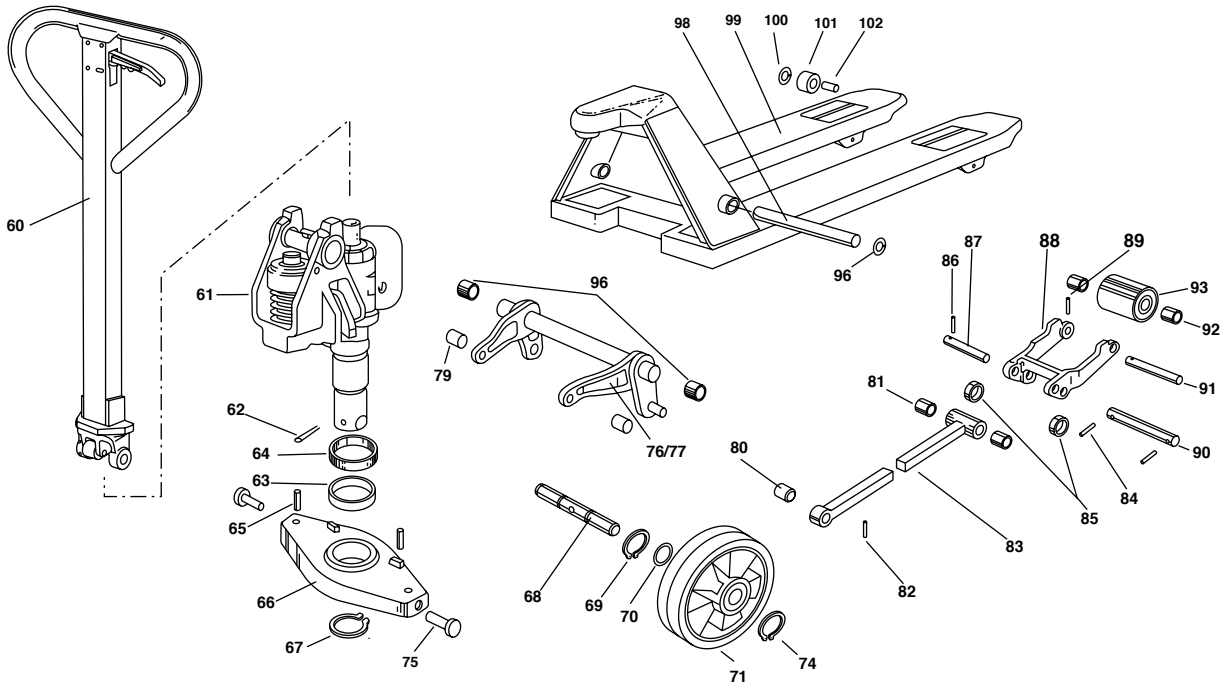
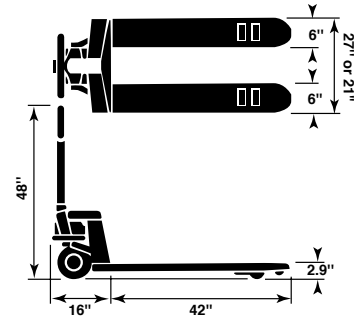
PALLET TRUCK

ECOLIFT



E05500 SERIES FRAME ASSEMBLY

- Load capacity: 5,500LBS
- Raised height: 7³/₄"
- Fork width: 6"
- Standard fork lengths: 48"/42"
- Front wheels (steer): 7" x 2"
- Body length (including pump): 16"
- Lowered height of forks: 2.9"
- Overall width across forks: 27"/21"
- Space between forks: 15"/8.5"
- Load rollers: 2.9" x 3⁵/₈"
- Wheels: polyurethane
- Approximate weight: 202LBS / 192LBS



ITEM #	SMH #	DESCRIPTION	ITEM #	SMH #	DESCRIPTION
60	E07392250	Handle Complete	82	E04996721	Spring Pin
61	E07392253	Pump Complete	83	E04996733	Push Rod
62	E04996649	Spring Pin	84	E04996745	Spring Pin
63	E08064182	Bearing	85	E04996756	Exit Roller
64	E05572562	Bearing Cap	86	E04996759	Spring Pin
65	E04996659	Spring Pin	87	E04996764	Shaft
66	E07392289	Pressure Plate	88	E04996767	Load Wheel Frame
67	E04996677	Circlip	89	E04996770	Spring Pin
68	E04996680	Steer Wheel Shaft	90	E04996784	Shaft
69	E07392292	Circlip	91	E04996787	Shaft
70	E04996685	Washer	92	E04996789	Washer
71	E06782322	Steer Wheel PU	93	E06782326	Load Wheel PU
72	E05257393	Steer Wheel Brg (Not Pictured)	94	E05257912	Load Wheel Brg (Not Pictured)
73	E06945921	Steer Wheel Cap (Not Pictured)	95	E06945969	Plastic Cover (Not Pictured)
74	E04996696	Circlip	96	E06945971	Circlip
75	E07392298	Arm Pin	97	E04996813	Circlip
76	E07877745	Lift Arm Ec5501	98	E04996820	Shaft Ec5500
77	E06945939	Lift Arm Ec5500	99	E07384938	Fork Frame Eo5500
78	E04996719	Copper Bushing	100	E04996828	Circlip
79	E05572647	Copper Bushing	101	E04996847	Entry Roller
80	E05572649	Copper Bushing	102	E04996850	Shaft
81	E05572650	Copper Bushing			



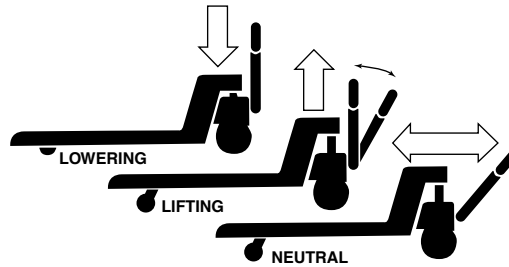
PALLET TRUCK

ECOLIFT

E05500 SERIES HANDLE ASSEMBLY

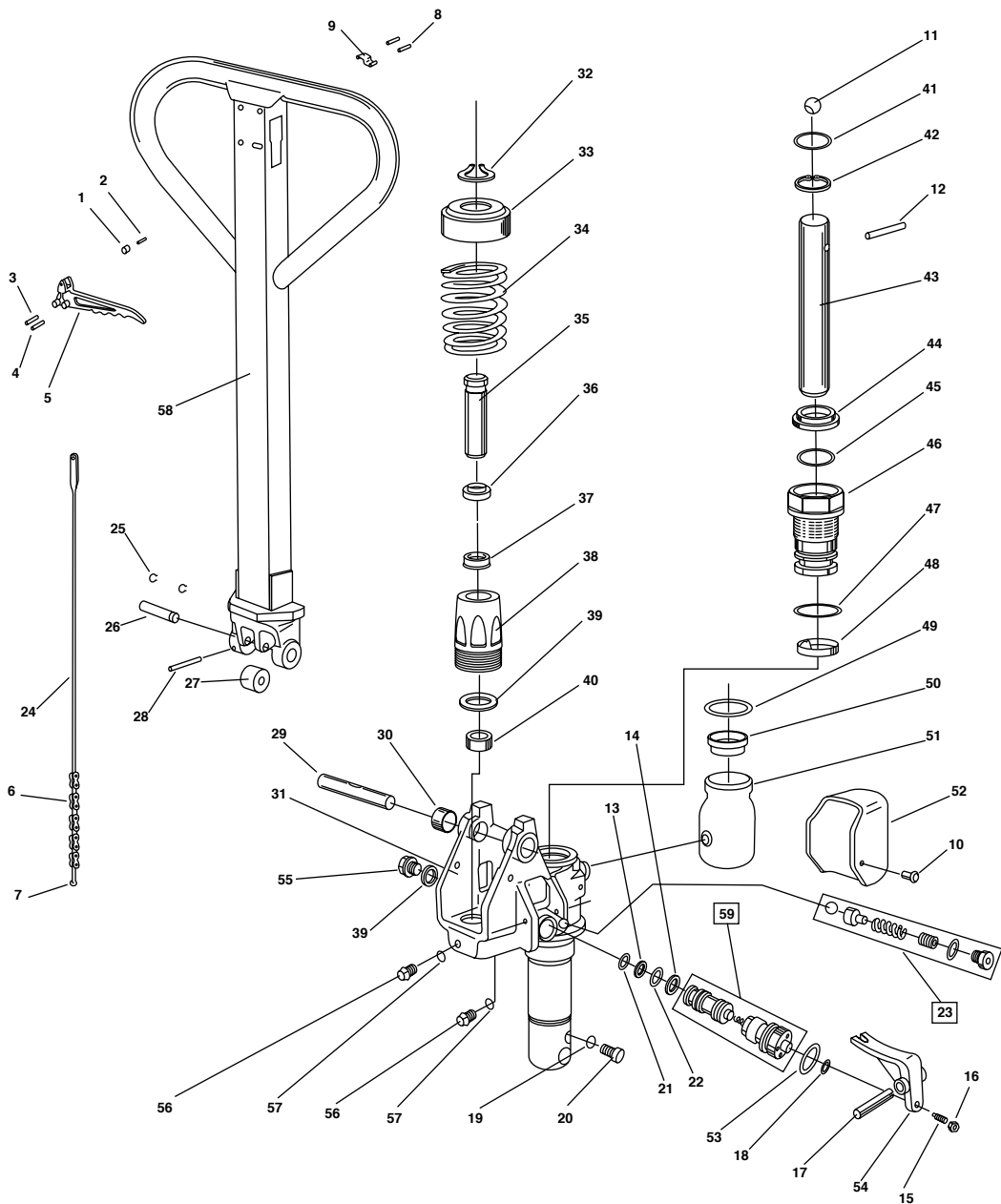
Hand Lowering Control-3 positions

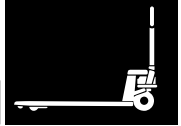
- Lifting-neutral-lowering with handle or foot pedal means extra safety
- Neutral allows pumping at the most convenient angle to the operator and free handle movement when the truck is in motion
- The handle returns automatically to the vertical position



Brake

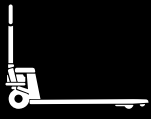
- Safety spring-loaded handle allows load to be lowered while in motion to act as a brake





E05500 SERIES HANDLE ASSEMBLY

ITEM #	SMH #	DESCRIPTION	ITEM #	SMH #	DESCRIPTION
1	E05075570	Rubber Stop	31	E07392158	Pump Body
2	E05015575	Tension Pin	32	E07392161	Circlip
3	E05015581	Tension Pin	33	E07392162	Spring Cap
4	E05015691	Tension Pin	34	E07392163	Plunger Spring
5	E05015693	Lowering Lever	35	E07392166	Plunger
6	E05015695	Chain	36	E07392172	Seal
7	E05015696	Chain Rod	37	E07392179	Seal
8	E05015707	Spring Pin	38	E07392184	Plunger Sleeve
9	E05016209	Spring Sheet	39	E07392189	Copper Seal
10	E05030889	Screw	40	E07392191	Spacer
11	E05030892	Steel Ball	41	E07392197	Washer
12	E05030898	Shaft	42	E07392203	Circlip
13	E05030901	O-Ring	43	E07392205	Ram
14	E05030903	O-Ring	44	E07392208	Seal
15	E05030905	Threaded Pin	45	E07392210	O-Ring
16	E05030906	Hex Nut	46	E07392212	Collar
17	E05030907	Spring Pin	47	E07392214	O-Ring
18	E05030909	Seal	48	E07392217	Seal
19	E05030910	Washer	49	E07392219	Steel Line
20	E05030911	Screw Plug	50	E07392223	Plug
21	E05572666	Overload Cap	51	E07392224	Reservoir
22	E05572667	O-Ring	52	E07392225	Cowling
23	E07384928	Overload Valve Assy	53	E07392226	O-Ring
24	E07392127	Linkage	54	E07392227	Activator
25	E07392138	Spring Pin	55	E07392231	Screw Plug
26	E07392146	Axle	56	E07392233	Screw Plug
27	E07392152	Pressure Roller	57	E07392242	Washer
28	E07392153	Spring Pin	58	E07392244	Handle
29	E07392156	Handle Yoke Axle	59	E07392245	Valve Assy
30	E07392157	Copper Bushing			

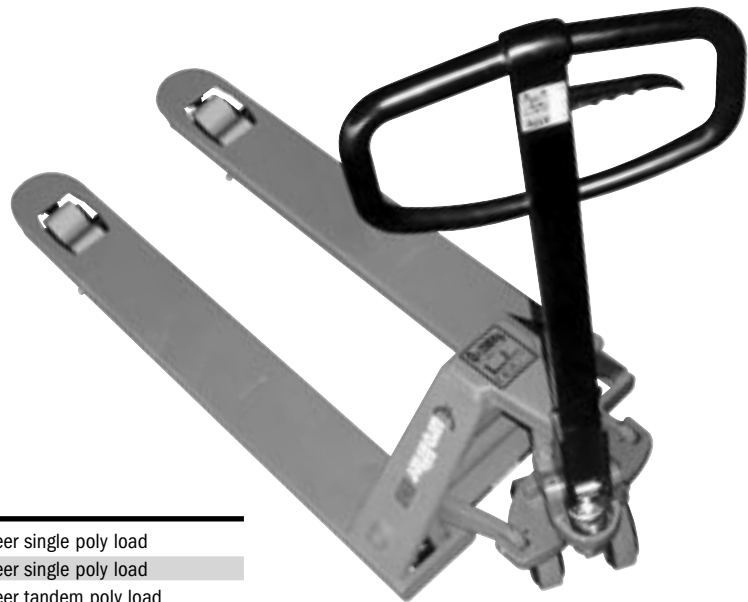


PALLET TRUCK

EUROLIFTER

MODEL EU5500 SERIES

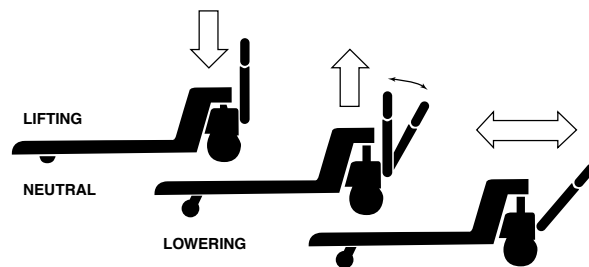
- Load capacity: 5,500LBS
- Large steer wheels
- High tensile steel frame and seamless forks
- 230° pivot action maneuvers in compact areas
- Spring-a-matic handle self-returns
- Insulated ergonomically designed handle
- Entry and exit rollers for easy entry and exit of pallets
- Painted quality safety color after anti-rust treatment
- Grease zerks and bushings on all linkages
- Canada only



SMH #	DESCRIPTION
EU5500	27" x 48" (686mm x 1219mm) Poly steer single poly load
EU5503	27" x 42" (686mm x 1067mm) Poly steer single poly load
EU5510	27" x 48" (686mm x 1219mm) Poly steer tandem poly load
EU5520	27" x 48" (686mm x 1219mm) Nylon steer single nylon load
EU5530	27" x 48" (686mm x 1219mm) Nylon steer tandem nylon load
EU5540	21" x 48" (533mm x 1219mm) Poly steer single nylon load

Hand Lowering Control-3 Positions

Lifting-neutral-lowering with handle or foot pedal means extra safety. Neutral allows pumping at the most convenient angle to the operator and free handle movement when the truck is in motion. The handle returns automatically to the vertical position.

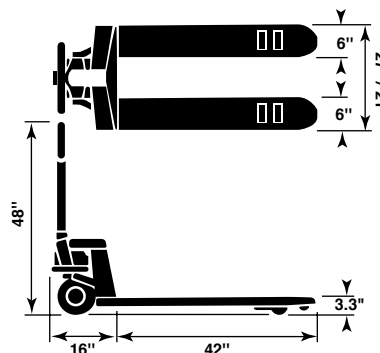


Brake

Safety spring-loaded loop handle allows load to be lowered while in motion to act as a brake.

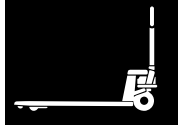
MODEL EU5500 SERIES FRAME ASSEMBLY

- Lowered height of fork: 2.9"
- Raised height: 7³/₄"
- Overall width across forks: 27"/21"
- Standard fork lengths: 48"
- Load rollers: 2.9" x 3⁵/₈"
- Front wheels (steer): 7" x 2"
- Wheels: polyurethane or nylon
- Body length (including pump): 16"
- Approximate weight: 202LBS / 192LBS

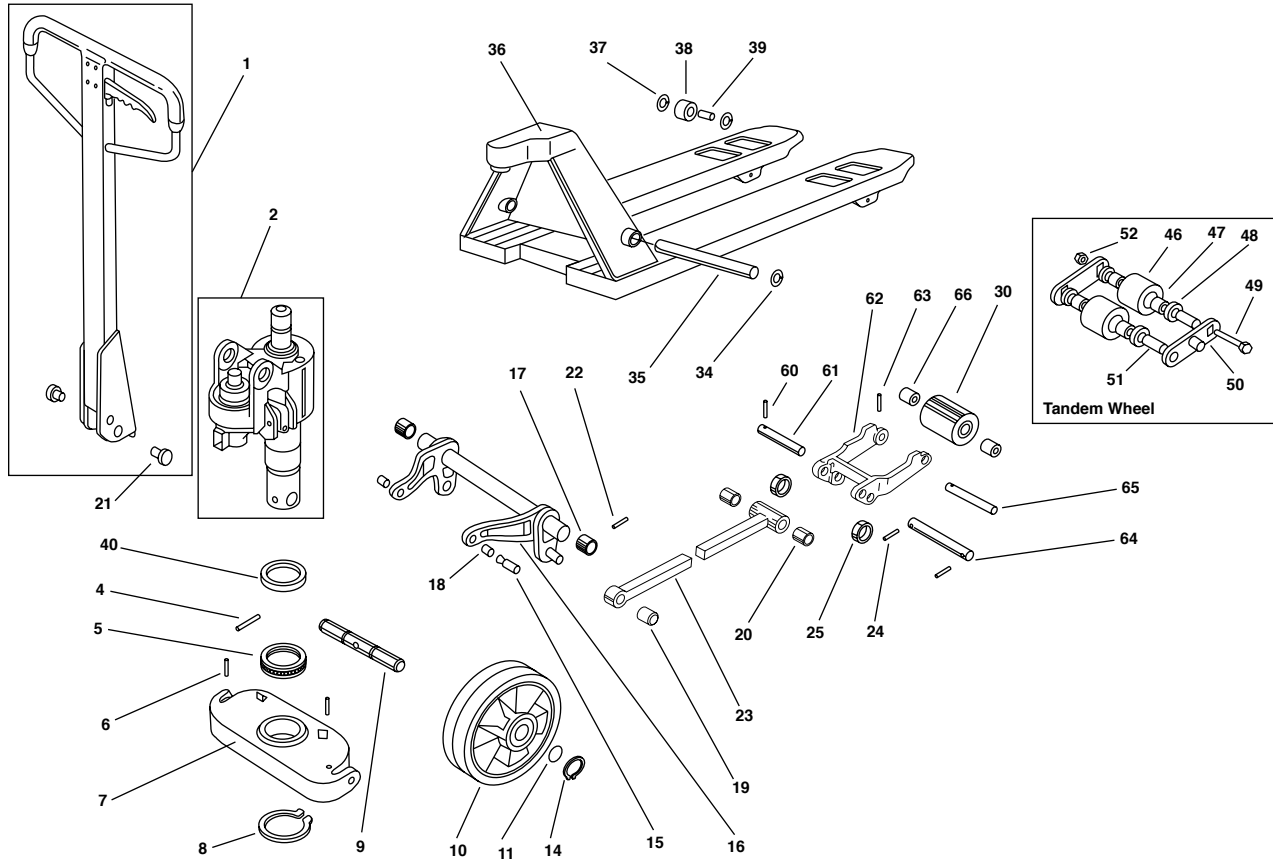


PALLET TRUCK

EUROLIFTER



MODEL EU500 SERIES FRAME ASSEMBLY



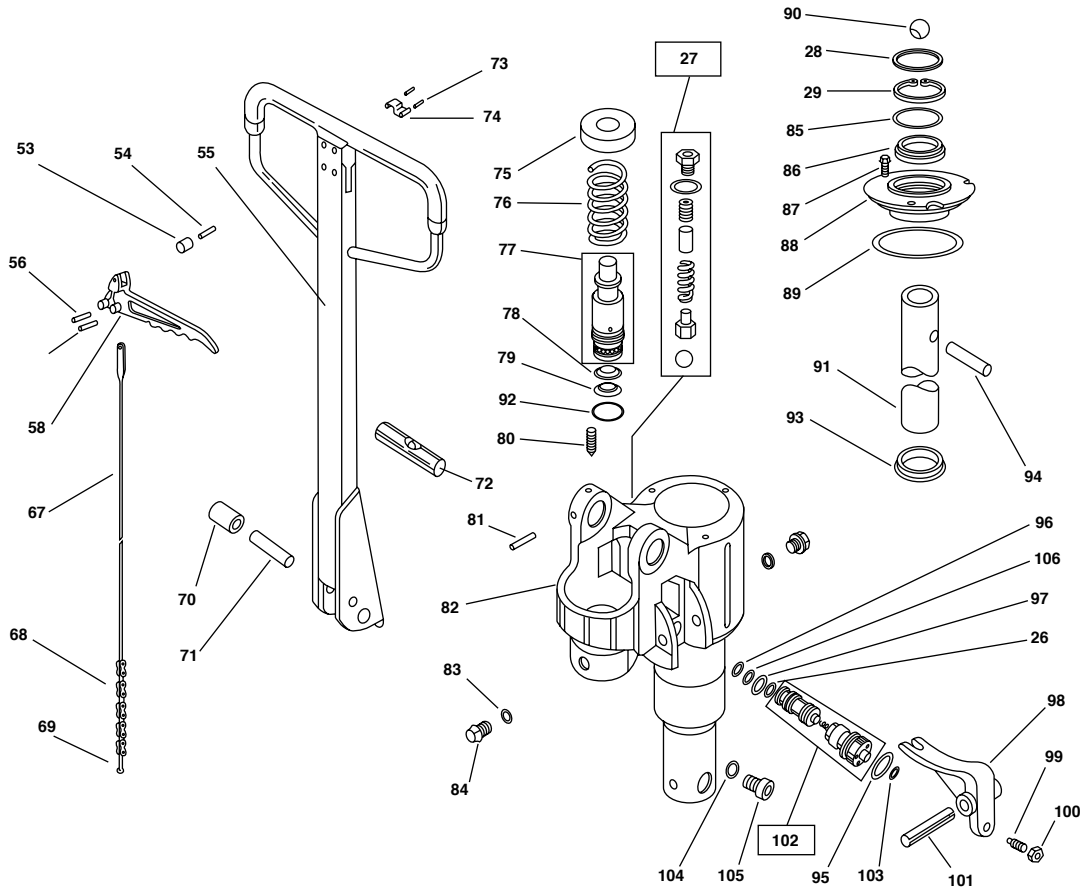
ITEM #	SMH #	DESCRIPTION	ITEM #	SMH #	DESCRIPTION
1	EU7254802	Handle Assembly	25	EU4996756	Exit Roller
2	EU5572645	Pump Assembly	30	EU5240570	Nylon Wheel Assembly
4	EU4996649	Spring Pin	EU5240569	Poly Wheel Assembly	
5	EU4996656	Bearing	34	EU4996813	Circlip
6	EU4996659	Spring Pin	35	EU4996820	Long Shaft
7	EU4996661	Pressure Plate	36	EU4996823	Fork Body, 27"
8	EU4996677	Circlip	EU4996823A	Fork Body, 20.5"	
9	EU4996680	Wheel Shaft	37	EU4996828	Circlip
10	EU4996685	Washer	38	EU4996847	Entry Roller
11	EU5257376	Wheel Nylon	39	EU4996850	Shaft
	EU5572658	Wheel Poly	40	EU5572652	Bearing Cap
14	EU4996696	Circlip	47	EU6973912	Washer
15	EU4996697	Arm Pin	48	EU6973914	Circlip
16	EU6945939	Lift Arm, 27"	49	EU6979342	Axle
	EU6945939A	Lift Arm, 21"	50	EU6979343	Wheel Frame Plate
17	EU4996719	Copper Bushing	51	EU6979344	Axle Bushing
18	EU5572647	Copper Bushing	52	EU6979345	Nut
19	EU5572649	Copper Bushing	60	EU4996759	Spring Pin
20	EU5572650	Copper Bushing	61	EU4996764	Shaft
21	EU5572651	Copper Bushing	62	EU4996767	Load Wheel Frame
22	EU4996721	Spring Pin	63	EU4996770	Spring Pin
23	EU4996733	Push Rod	64	EU4996784	Shaft
24	EU4996745	Spring Pin	65	EU4996787	Shaft
			66	EU4996789	Washer



PALLET TRUCK

EUROLIFTER

MODEL EU5500 SERIES HYDRAULIC PUMP ASSEMBLY



ITEM #	SMH #	DESCRIPTION
26	EU5572667	Poly Washer
27	EU5572668	Overload Valve Assembly
28	EU5294915	Washer
29	EU5294916	Circlip
53	EU5015570	Rubber Stop
54	EU5015575	Spring Pin
55	EU7254801	Handle
56	EU5015581	Spring Pin
57	EU5015691	Spring Pin
58	EU5015693	Lowering Lever
67	EU5015694	Linkage
68	EU5015695	Chain
69	EU5015696	Chain Rod
70	EU5015697	Pressure Roller
71	EU5015699	Shaft
72	EU5015705	Shaft
73	EU5015707	Spring Pin
74	EU5016209	Spring Plate
75	EU5016246	Spring Cap
76	EU5016247	Spring
77	EU5016248	Plunger Assembly
78	EU5016249	Seal
79	EU5016250	Seal
80	EU5016251	Screw
81	EU8041494	Spring Pin

ITEM #	SMH #	DESCRIPTION
82	EU5016252	Pump Body
83	EU5016253	Washer
84	EU5030886	Screw Plug
85	EU5030887	O-Ring
86	EU5030888	Seal
87	EU5030889	Screw
88	EU5030890	Pump Cap
89	EU5030891	O-Ring
90	EU5030892	Ball
91	EU5030893	Cylinder
92	EU5030894	O-Ring
93	EU5030895	Seal
94	EU5030898	Pin
95	EU5030899	O-Ring
96	EU5030901	O-Ring
97	EU5030903	O-Ring
98	EU5030904	Activator
99	EU5030905	Bolt
100	EU5030906	Nut
101	EU5030907	Spring Pin
102	EU5030908	Valve Assembly
103	EU5030909	O-Ring
104	EU5030901	Washer
105	EU5030911	Bolt
106	EU5572666	Poly Washer



HAVILAND CORPORATION

www.havilandcorp.com



When should you replace blades?

As a preventive maintenance procedure, blades should be changed when the machine is being serviced. It is also time to change your blades if you notice streaking, chattering, or insufficient liquid pickup.